




**Water soluble. Easily absorbed**  
World-leading polyphenols for precision health

# RenoFlavone™

**370%** | *Most bioavailable genistein supporting menopause women health*

- 100,000X Aqueous solubility
- 3.7X Superior bioavailability
- Clinical proven efficacy
- International innovation gold awards
- US FDA New Dietary Ingredient (1283)
- Global patents in five countries

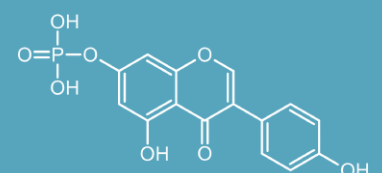


 **High solubility**  
**High bioavailability**

 **Small molecule**  
**Fast absorption**

 **Efficient delivery**  
**Maximum efficacy**

RenoFlavone™ — a breakthrough fermented soy extract powered by RenoSorb™ postbiotic exo-delivery technology. Standardized with highly water-soluble genistein phosphate, it ensures superior absorption and efficacy, unleashing nature’s restorative power. Clinically proven to support women’s wellness, RenoFlavone™ helps ease menopausal and premenstrual discomfort. Among the twelve natural isoflavones, genistein is the most potent phytoestrogen, showing high ERβ/ERα affinity that promotes feminine vitality.



Genistein phosphate

# RenoFlavone™

Most bioavailable genistein  
supporting menopause women health



MENOPAUSE  
SUPPORT



PMS  
RELIEF



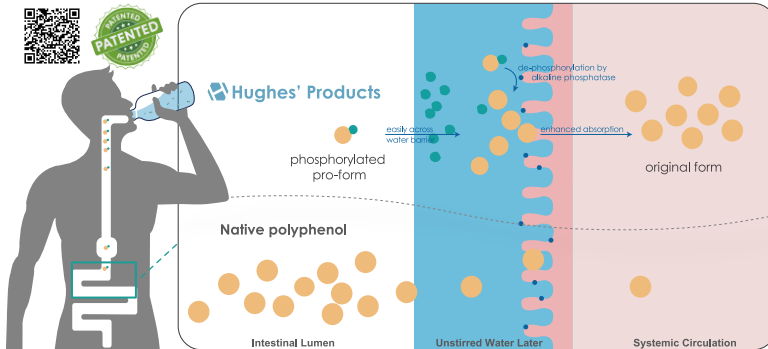
BONE  
HEALTH



HEART  
HEALTH

## RenoSorb™ Technology platform

From Solid to Liquid  
Next Generation pharma-grade postbiotics exo-precursor delivery technology



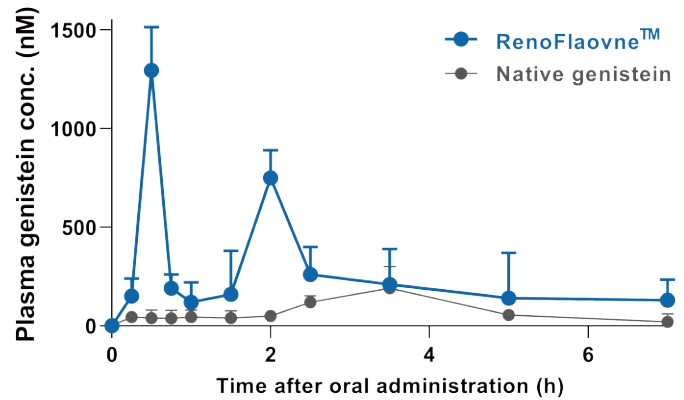
Vitafoods Europe  
2023 Startup Innovation  
Challenge Award  
**Finalist**

2025 Gold Award Winner, Taipei Biotech Awards  
— The Biotech Oscars “Innovative Technology  
Award (Applied Biotechnology)”

2023 Top 5 Global Finalist, Vitafoods Europe Startup  
Challenge Award “Most Innovative Technology  
Supporting the Nutraceutical Industry”

## Pharmacokinetic profile

3.7x better absorption

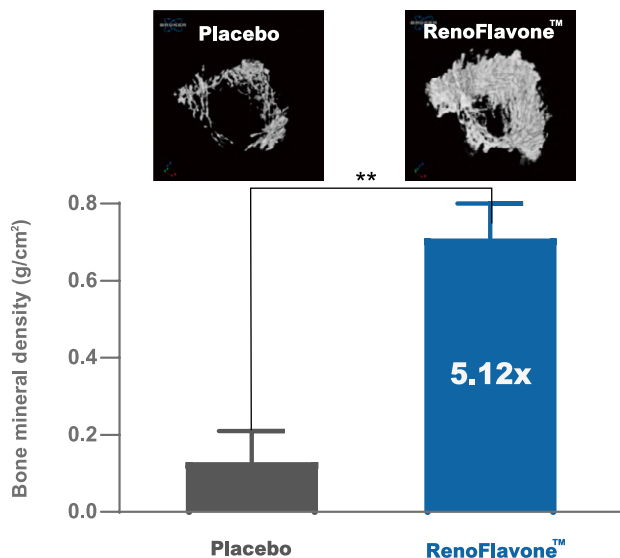


Mean plasma concentration-time profiles of genistein in rats after oral administration of native genistein and RenoFlavone™ at 3.7 μmol/kg bw. Data are mean ± SE (n = 4).

Journal of Functional Foods 13 (2015): 323-335.

## Animal study

### Postmenopausal bone health

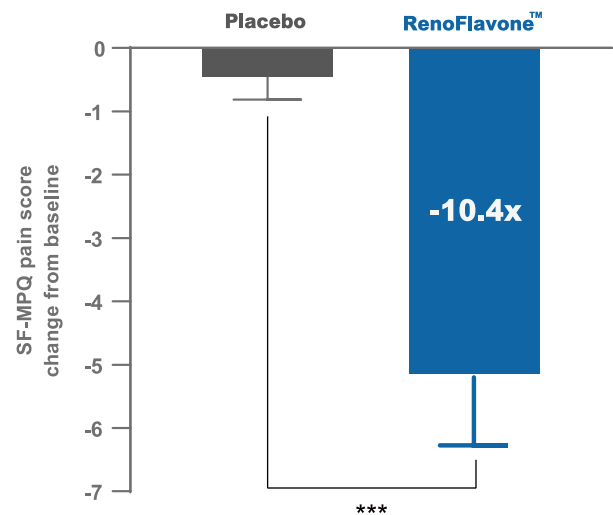


Osteoprotective effect of RenoFlavone™, containing genistein derivatives with high bioavailability, in ovariectomized rats. Micro-CT analysis of effect of treatments on femoral metaphysis of ovariectomized rats. BMD of placebo and RenoFlavone™ group (15.2 μmol/kg bw/day) after 12-week treatment. Data are mean ± SD, n = 6. Value are mean ± SEM. \*\*\*p < 0.01. RenoFlavone™ vs placebo group (paired t-test).

Journal of Functional Foods 58 (2019): 171-179.

## Clinical study

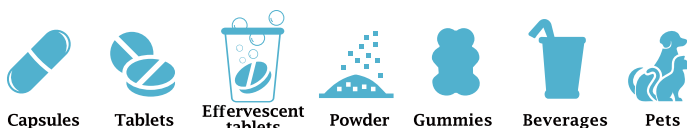
### Relieve PMS discomfort



A randomized controlled trial of RenoFlavone™ in the treatment of primary dysmenorrhea. Effects of RenoFlavone™ (20 mg/day) and placebo on menstrual pain score (Short form McGill pain questionnaire score, SF-MPQ) in first month (The trial is ongoing). Value are mean ± SEM, n = 40. Comparison of changes between the study groups (chi-square test). \*\*\*p < 0.001.

Unpublished data

Recommended dose: 80-160 mg



ISO  
22000

HALAL

Vegan

GMO

Gluten

ETO

## Hughes Biotechnology Co., Ltd.

ADD 12F.-2, No.420, Sec.1, Keelung Rd.,  
Xinyi Dist., Taipei City 110, Taiwan

TEL +886-2-2758-2232

WEB <http://www.hughesbiotech.com/>

MAIL [service@hughesbiotech.com](mailto:service@hughesbiotech.com)



Hughes  
Biotechnology